



AI-Enabled Certainty: Taking Control with Better Data and Faster Decisions

Roundtable Insights Report

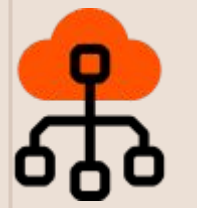
Executive Summary

Get ready to explore the key insights, challenges, opportunities, and strategic priorities shaping the future of construction, with a focus on AI adoption, connected data, operational efficiency, and smarter decision-making.

 **Construction technology investment patterns**

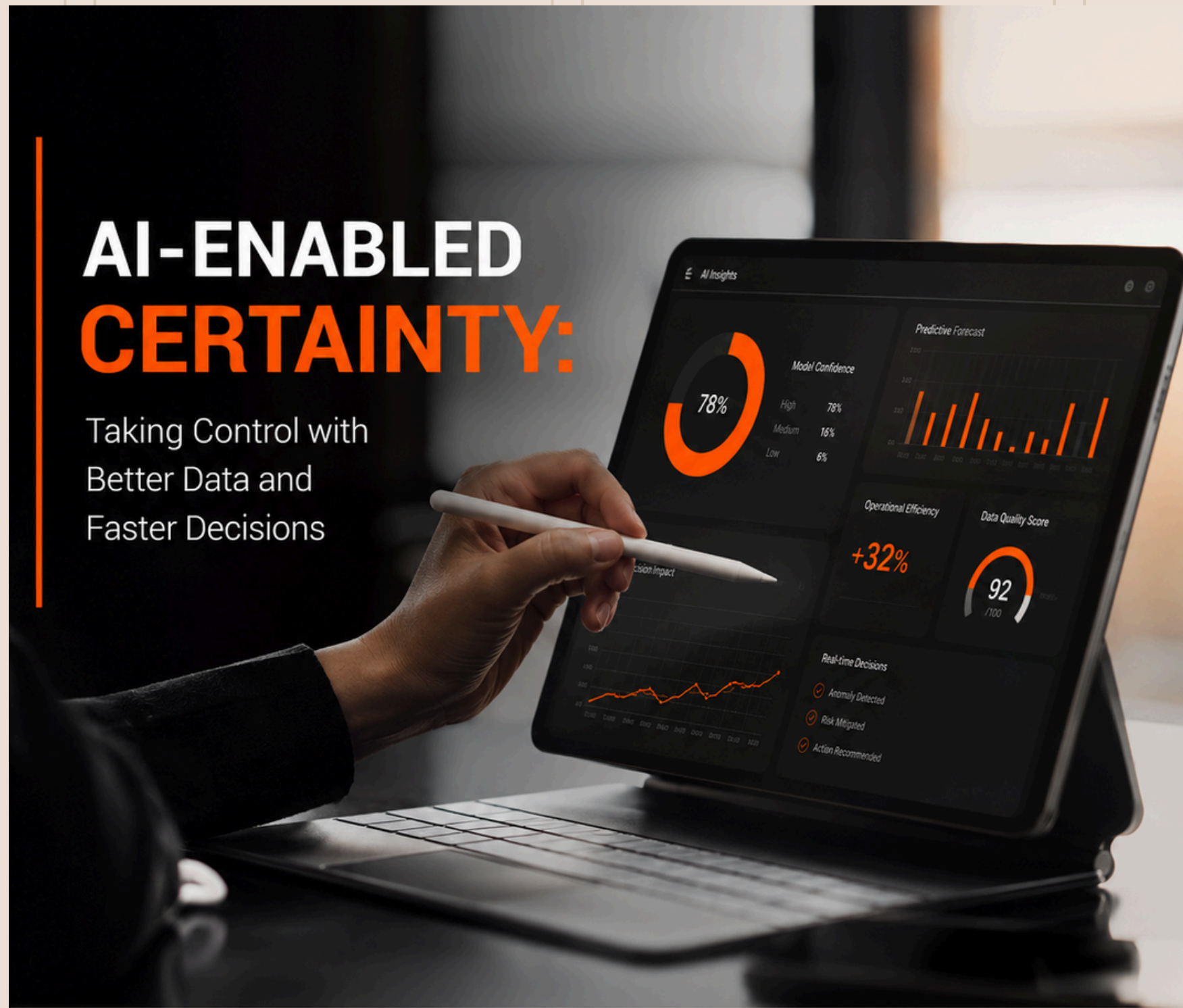
 **Digital design, physical AI, and the future of construction**

 **Data foundations and AI-driven portfolio governance**

 **AI adoption and agentic workflows in construction**

 **Audience Questions**

 **Conclusion**



AI-ENABLED CERTAINTY:

Taking Control with Better Data and Faster Decisions



BETTER DATA
Higher quality.
Stronger foundation.




SMARTER INSIGHTS
AI that sees more.
Predicts better.

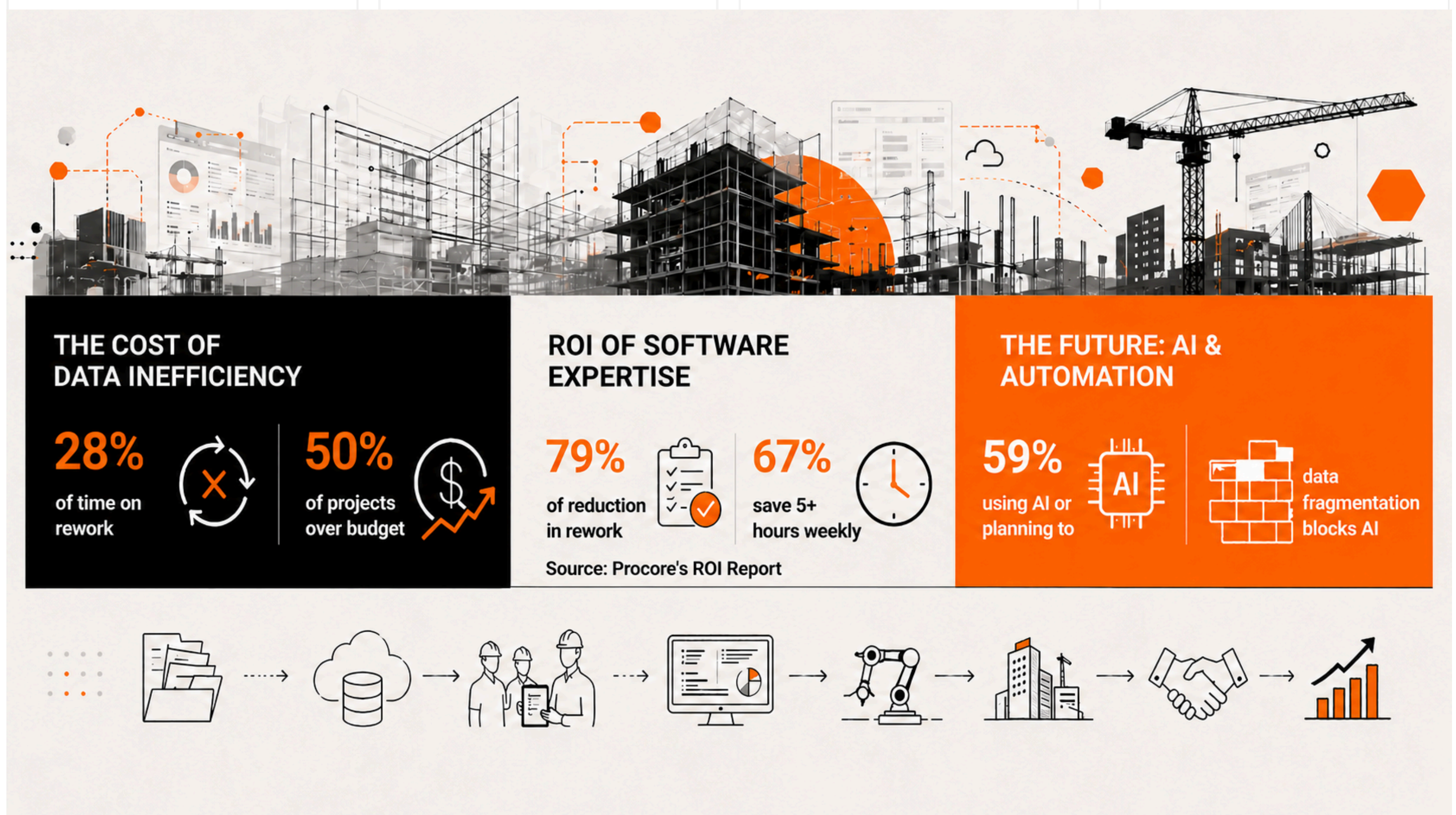



FASTER DECISIONS
Real-time clarity.
Business in motion.


AI-ENABLED CERTAINTY: TAKING CONTROL WITH BETTER DATA AND FASTER DECISIONS

In a region defined by scale, complexity, and immovable deadlines, construction leaders can no longer rely on fragmented information. With supply-chain disruption, cost volatility, and rising delivery pressure, achieving certainty has never been more challenging.

 This report, informed by a Procore-hosted roundtable with senior industry leaders, focuses on what matters most: establishing a connected data foundation that enables AI to deliver faster, more accurate, and more resilient decisions while keeping humans firmly in control.



 AI is shifting from promise to strategic advantage. Competitive differentiation will come from embedding AI into core business and project decision making, not treating it as a side initiative - and this depends on connected, trusted data.

 Many organisations still operate with fragmented information across preconstruction, delivery, and asset management, limiting real-time visibility and portfolio oversight. Emerging applications - from early delay detection to cost and performance anomaly identification - demonstrate AI's expanding role in strengthening predictability and resilience.

Construction technology investment patterns

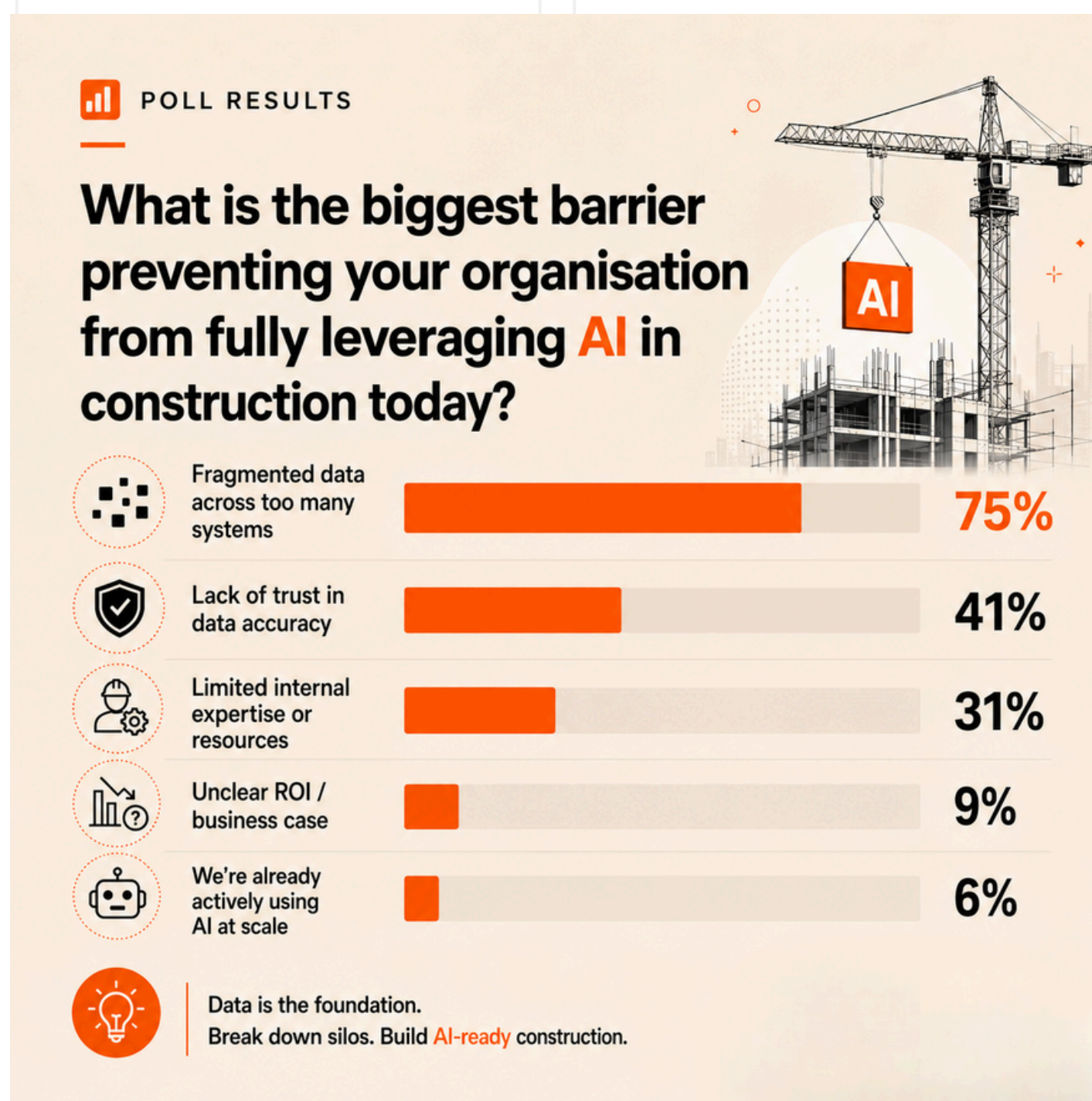
Projects are expanding in scale and complexity, driven by urbanisation, sustainability requirements, supply-chain instability, and rising expectations for speed and certainty. Organisations are generating unprecedented volumes of data across design, procurement, site operations, and handover, yet many struggle to convert information into timely decisions.

A poll conducted during the roundtable underscored the issue: the biggest barrier to AI adoption is not technology but the state of project data. Information remains scattered across systems, making it difficult to locate, trust, and use. Construction has abundant data, but fragmentation limits its value.

75%

Time spent searching for and reconciling scattered information

As complexity grows, these visibility gaps drive incorrect decisions, delays, and cost overruns. High-performing projects instead rely on connected ecosystems where all stakeholders operate from unified, AI-supported data.



Construction firms typically progress through **three stages of technology investment**. First, they adopt core systems to **digitise processes**, often creating disconnected tools and external partner data. The second stage **consolidates this information into data** warehouses or data lakes, enabling unified reporting, analytics, BIM and digital-twin integration, and the development of AI models. The third stage **applies AI at scale**, powered by this data foundation.

Industry investment is concentrating on three domains:

- 01 Connected construction and site operations
- 02 Supply-chain optimisation
- 03 Off-site manufacturing

AI adoption is emerging through embedded software capabilities, enterprise data-AI platforms, and team-level experimentation. Productivity tools streamline administrative work, while applications search, interpret, and extract value from consolidated project information. Procore's Future State of Construction report highlights the opportunity: **46% of project time is spent on information gaps and 18% searching for data.**

Beyond productivity, AI is increasingly applied to risk management, reinforced by investments in data-centres and broader AI ecosystems. Examples include:

- + **Schedule-optimisation tools predicting delays**
- + **Budget and tendering automation**
- + **Quality and progress-tracking solutions**
- + **Compliance-monitoring platforms**
- + **Safety-focused AI for early risk detection**

Digital design, physical AI, and the future of construction

The next major wave of AI investment is centred on digital design and the shift to physical AI. Contractors are being pulled earlier into design and engineering, accelerating investment in spatial modelling, BIM integration, and advanced simulation tools.






These capabilities enable physical AI, where construction moves from process-based coordination to spatially and temporally orchestrated operations. Every site activity is tracked through precise coordinates and timestamps, allowing real-time optimisation of labour, materials, and equipment.



Start simple and grow:

Construction teams will **not invest time in tools that require heavy configuration** or have high development overhead. Focus on **simple value-drivers first**, and expand complexity after obtaining trust and identifying power users.

The best use cases are:

-  **High Frequency:** Daily, repetitive tasks can be eliminated and replaced with strategic thinking.
-  **High Impact:** Direct influence on reducing costs, saving time, and increasing quality.
-  **High Visibility:** Viewable by peers and leaders, perception of impact will spread to others.



Data foundations and AI-driven portfolio governance

A consistent theme across the sector is that organisations face a data problem, not an AI problem.

Fragmented information prevents firms from building the reliable foundation required for effective AI adoption. A platform-based approach, consolidating information, standardising workflows, and integrating partners, creates a single source of truth, improving consistency, auditability, and scalability while reducing technology sprawl.

With centralised, structured, secure data, construction-specific AI delivers intelligent search, automated workflows, cross-system reporting, predictive forecasting, and benchmarking. Enhancements across the asset lifecycle, including connected BIM, portfolio management, and digital asset registers, ensure construction data informs long-term operations.

This transformation is driven by four pillars:

- + Unified intelligence for confident decisions
- + Proactive risk and cost management
- + Productivity and operational excellence
- + Accessible, construction-ready AI



AI adoption and agentic workflows in construction

Most organisations remain in the early stages of AI adoption, with many teams still relying on basic tools to search fragmented datasets. Personal AI assistants are being tested, but the real value lies in connecting scattered information sources and improving the speed and reliability of decision-making.

Modern construction AI can interpret a wide range of project information and consolidate it into coherent insights. It helps teams retrieve and compare documents quickly, show relevant details, extract key quantities or materials information, and provide hands-free access to data in the field. As these capabilities mature, they reduce administrative effort and strengthen on-site decision-making.



Audience Questions

The following is a selection of audience questions and the answers provided by the panel.

 **QUESTION 1**

Can the AI agents operate in multiple languages?

Yes, the Procore AI agents support different languages, including English, Spanish, French, Arabic, Chinese, and Japanese. It can translate and operate across languages quickly and reliably, & no significant limitations have been encountered in deployment so far.

 **QUESTION 2**

Is Procore a Common Data Environment (CDE) or an asset management platform? Can it integrate with existing asset information systems?

Procore is a connected construction platform. Its CDE and asset-management capabilities are expanding, with the platform already links all project stakeholders and systems across the construction lifecycle. With more than 560 pre-built connectors and fully open APIs, it integrates with existing asset information systems. This allows organisations to consolidate data into a single environment and interrogate it across projects and assets, strengthening visibility, standardisation, and decision-making.

 **QUESTION 3**

Can AI convert drawings, specifications, and scopes of work into a Procore-ready estimate? And can it interpret handwritten markups that circulate on many projects?

The AI can interpret many construction documents, including drawings, specifications, scopes of work, and other structured or unstructured inputs, and convert them into structured information that supports estimating workflows. While not a full quantity-takeoff tool, it extracts and organises content for schedules, bills of materials, and early-stage estimates. It also handles handwritten material, having been used on trucking tickets and field annotations, and can interpret anything the human eye can detect, making it effective where paper-based markups remain common.



Jennifer Petrie
ENTERPRISE ACCOUNT EXECUTIVE, MENA
PROCORE



Adam Burstow
ENTERPRISE ACCOUNT EXECUTIVE, MENA
AWS



Andrew Schwalm
DIRECTOR OF CUSTOMER SUCCESS
PROCORE AI



Charbel Abi Khalil
SOLUTIONS CONSULTANT
PROCORE



Audience Questions

QUESTION 4

What functionality does Procore provide in the operate phase, and does it replace a maintenance management system (MMS)?

Procore's operate-phase capabilities are expanding. Construction data can be exported into digital-twin or facilities-management environments, ensuring continuity from build to operate. An asset-management solution in beta links assets to BIM models, drawings, inspections, and full project history and creates a comprehensive dataset optimized for MMS handover. As this matures, organisations will manage asset status, maintenance, and work orders within Procore, supporting many functions of traditional MMS and enabling lifecycle-wide asset oversight.

QUESTION 5

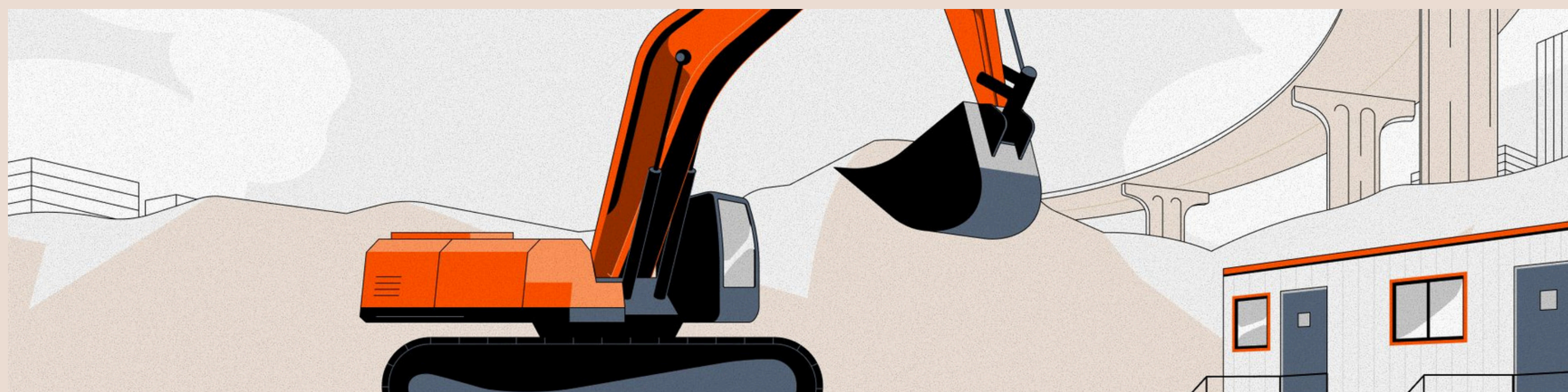
How advanced is the AI in extracting quantities from 2D drawings and linking information across sheets? Can it support quantity-related estimating workflows?

The AI can extract structured information from drawings, including values, annotations, and bill-of-materials data, and interpret plans like plumbing diagrams and isometric drawings. This supports many quantity-related estimating workflows, by organising drawing content into usable inputs. It is not a full quantity-takeoff tool, but excels at reading plans, understanding context, and structuring information for estimators, especially where quantities are embedded. Adoption typically starts with a specific trade or workflow, delivering early wins before expanding to broader use cases.

QUESTION 6

In your most successful deployment, what changed in how project managers and leadership actually make decisions - not just what data they see?

Successful AI adoption reshaped the decision-making environment, not just the data available. Training, quality assurance, and oversight processes evolved as AI augments team judgement. Project managers gained faster access to structured insights, leadership gained clearer accountability, and manual data handling decreased. The result is more proactive, evidence-based decisions supported by consistent information flows and greater confidence in the underlying data.





Audience Questions

 **QUESTION 7**

How capable is Procore AI in converting architectural or interior layouts into a construction-ready BOQ with quantities, specifications, and trade-wise scope, and what manual checks remain?

Converting architectural or interior layouts into full construction-ready BOQs is not the primary focus of Procore AI. We support this in targeted areas, such as extracting quantities from electrical feeder diagrams or generating bill-of-materials data from isometric drawings. But we do not claim comprehensive, large-scale takeoff automation today. Our approach is to deliver accuracy within well-defined scopes while expanding capability to more complex, end-to-end quantity extraction.

 **QUESTION 8**

Give a tangible example of investments of AI in that paid off? What is the ROI period?

A clear example comes from a contractor in the southeastern US, which received a 400-page isometric plumbing package. Using Procore AI powered by Datagrid, the team extracted bill-of-materials data, converted it into a material estimate, applied labour-hour factors, and generated a structured internal estimate and baseline schedule. The full package was then issued as a bid proposal.

This workflow normally requires around 80 hours of manual effort; the AI-assisted process took two. The time saved allowed the team to pursue five additional bids they would otherwise have declined. With a historical win rate of one in three, expanding from one bid to six increased their likelihood of securing work from 33% to winning two projects within the same time window - delivering a clear, immediate return on investment.

Conclusion

The industry is entering a decisive period of transformation. While data is abundant, fragmentation limits AI's potential. High-performing projects increasingly operate through connected ecosystems supported by AI-driven intelligence.

The next wave - digital design, physical AI, and agentic workflows - will define how projects are delivered. Firms that build connected, construction-ready data foundations will unlock AI's full value, achieving more predictable, productive, and resilient delivery at scale. Those that do not risk falling behind as the industry accelerates toward an AI-enabled future.